

CERTIFICATE OF LOCATION OF GOVERNMENT CORNER

NORTH QUARTER Corner of Section 35, Township 107, Range 41, 5TH P.M.

STATE OF MINNESOTA, County of MURRAY

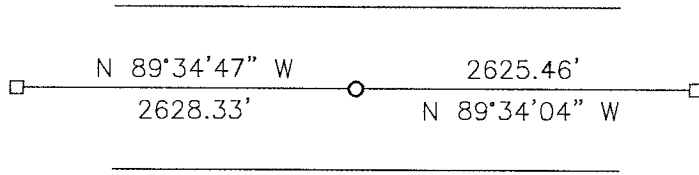
At the corner location shown on the sketch:

On 11-17-2010 found a 3/4" IRON
DATE

left monument as found, lowered monument, removed monument (explain)

On _____ placed a _____
DATE

SKETCH OF REFERENCE TIES



Minnesota State Plane Coordinate
 System Murray County Datum
 NAD83 (1996)

N: 168738.025
 E: 508735.662

Statement of evidence relative to this corner location is on back of page.

I hereby certify that this document and the data contained herein was prepared by me or under my direct supervision.

James V. Johnson 1/12/11
SIGNATURE DATE

Registration No. 43844

- Land Surveyor, Professional Engineer
 County Surveyor, County Engineer

OFFICE OF THE COUNTY RECORDER
 County of _____

I hereby certify that this document was filed in the Co. Recorders office at _____ .M on the _____ day of JAN 18 2011 A.D. 20 _____

County Recorder *James V. Johnson*
 By _____, Deputy

DOCUMENT NO. _____

Statement of Evidence

In 1861, L.G.M. Fletcher did the original subdivision of the township.

On February 9, 2000, Moseng Land Surveying found a 3/4" iron at the corner.

On November 17, 2010, Bueltel-Moseng Land Surveying found a 3/4" iron at the corner. We accepted the iron.